



Posamenten

Trimmings



GERSTER  
FINEST GERMAN  
TRIMMINGS

**90126**

col. 0001  
100% PES



col. 0238



col. 0146



col. 0027



col. 0200

col. 0999





**90127**  
col. 0001  
100% PES



col. 0238



col. 0146



col. 0027

col. 0200

col. 0999



**9881**  
col. 3914  
98% CV 2% PES



**9896**  
col. 3914  
95% CV 5% PES



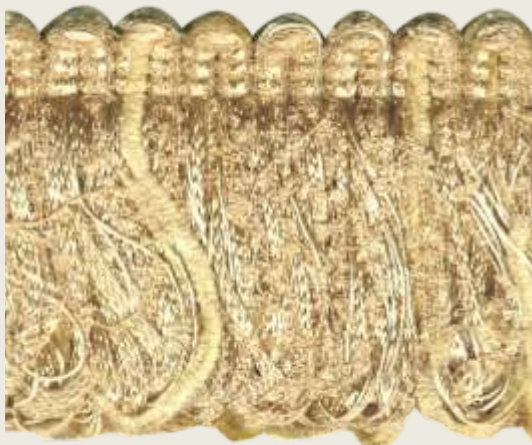
**3840**  
col. 3914  
48% CV 40% CO  
12% others



**3841**  
col. 3914  
49% CV 45% PES  
6% others



**9863/5 cm**  
col. 3914  
54% CV 26% PES 20% PAN



**9869/6 cm**  
col. 3914  
42% CV 19% PES 39% PAN



Farbkarte / color card



**9896**  
col. 3914  
95% CV 5% PES



col. 7915



col. 0200



col. 4921



col. 0212



col. 6928

**9899/4 cm**  
col. 4950  
98% CV 2% PES



**3857**  
col. 4950  
50% CV 44% CO  
6% others



col. 4951



col. 8936



col. 8937



col. 8938



col. 9912





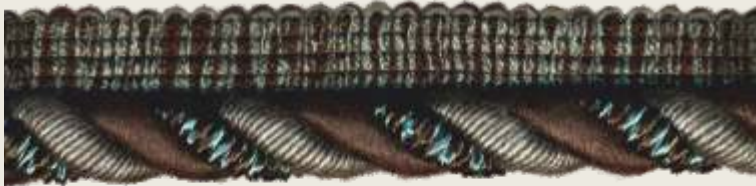
**3766**  
col. 0021  
49% CV 45% CO 6% others



col. 0999



col. 4924



col. 4929



col. 0212



col. 9903

**9744/4 cm**  
col. 0721  
90% CV 10% PES



**3872**  
col. 0721  
47% CO 38% CV  
15% others





**8136**

45% CV 55% PES



**8231**

52% CV 30% CO 18% PES



**8283**

50% CV 24% PES 16% CO 8% MTF



**8197**

53% CV 27% CO 20% PES



**9409**

59% CV 28% PES 4% MTF



**8904**

37% CV 48% CO 15% PES



**8560**

48% CV 26% CO 26% PES



**8025**

49% CV 22% PES 19% CO 10% MTF



**8884**

35% CO 32% CV 20% PES 13% MTF



**9166**

60% CV 20% CO 20% PES



**9811**  
col. 0219  
96% CV 4% PES



col. 0002



col. 0200



col. 8610



col. 1173



col. 0567



col. 0282



col. 3056



col. 0999





**3814**  
col. 0411  
88% CV 12% others



**9774**  
col. 0411  
99% CV 1% others

col. 0282



col. 0179

col. 1162



col. 1075

col. 8020



col. 0800

**9786**  
96% CV 4% PES



col. 9202



col. 0999

col. 3182



col. 0129

col. 8610



col. 0567

col. 3056



col. 9203

col. 0002



col. 0200

col. 2189



col. 2411

col. 1089



col. 0282

col. 1188



col. 1645

col. 9051



col. 0057



col. 0002

**3723**

60% CV 33% CO 7% others



col. 0057



col. 0129



col. 0200



col. 0282



col. 1567



col. 0999



col. 1089



col. 2189



col. 2411



col. 3056



col. 3182



col. 3948



col. 8610



col. 8985



col. 8986



col. 9051



col. 9202



col. 9203

**7985/8 cm**

col. 0003

45% CV 45% CO 10% PES



**7980/11 cm**

col. 0003

45% CV 45% CO 10% PES





**3821**  
col. 9205  
48% CO 47% CV 5% others



col. 9206



col. 9207



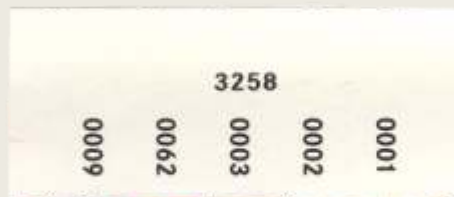
**3759**  
col. 0002  
85% CO 15% others



**3747**  
col. 0002  
75% CO 25% CV



col. 0031



**3258**  
100% CV



**9741**  
col. 3948  
99% CV 1% PES



col. 8985



col. 8986





3932



col. 3014



col. 8089



3931



col. 4028



col. 8090



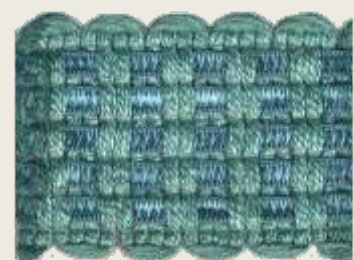
9741/4 cm



col. 0272

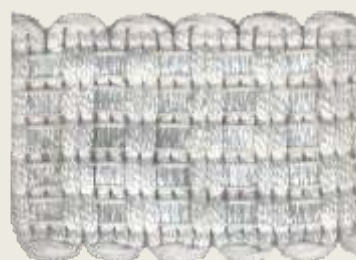


col. 8092



90165

col. 0219



col. 6044



col. 8093



col. 0179



col. 6046



col. 8088



col. 7978



col. 0999



## SCHNURKARTE / CORD LIBRARY

**3302**

50% CV 40% CO 10% others  
VE 25 m  
Lieferung innerhalb 7 Tage  
ready for dispatch within 7 days



**3796**

46% CV 44% CO 10% others  
VE 25 m  
Lieferung innerhalb 7 Tage  
ready for dispatch within 7 days



**3317**

60% CV 40% CO  
VE 25 m



**3310**

51% CV 49% CO  
VE 25 m



**3307**

70% CV 30% CO  
VE 25 m



**3311**

63% CV 37% CO  
VE 25 m



**3324**

100% CV  
VE 50 m



**3321**

100% CV  
VE 50 m



## FARBKARTE / COLOR CARD

0001 0002 0411 1089 0015 0282 0072 1204 0256 1075 1205 1209 0276 0265 0423 1097 0800 0239 0999 0003



**GERSTER**

FINEST GERMAN  
TRIMMINGS

## SCHNURKARTE / CORD LIBRARY



**8617**

65% CV 34% PAN 1% PES  
VE 25 m



**8718**

100% CV  
VE 25 m



**3263**

62% CV 37% CO 1% PES  
VE 25 m



**3742**

65% CV 18% CO 13% PAN 4% PES  
VE 25 m

Lieferbar innerhalb 14 Tage  
ready for dispatch within 14 days

## FARBKARTE / COLOR CARD



8718

col. 0190



col. 0034



col. 0220



col. 0128



col. 0464



col. 0166



col. 0410



col. 0124



col. 6957



col. 0169



col. 0235



col. 0160



col. 0178



col. 0086



col. 0200



col. 0132



col. 0201



col. 0089



col. 1056



col. 0272



col. 0400



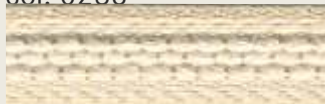
col. 0999



col. 0219



col. 0238



col. 0146



col. 0108



col. 0105



col. 0431



col. 0042



col. 0516



col. 2000



col. 0052



col. 0139



col. 0003



col. 0122



col. 0427



col. 0145



col. 0118



col. 0423



col. 0134



col. 0135



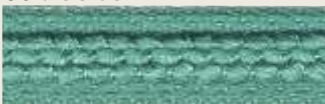
col. 1094



col. 0297



col. 0540



col. 0530

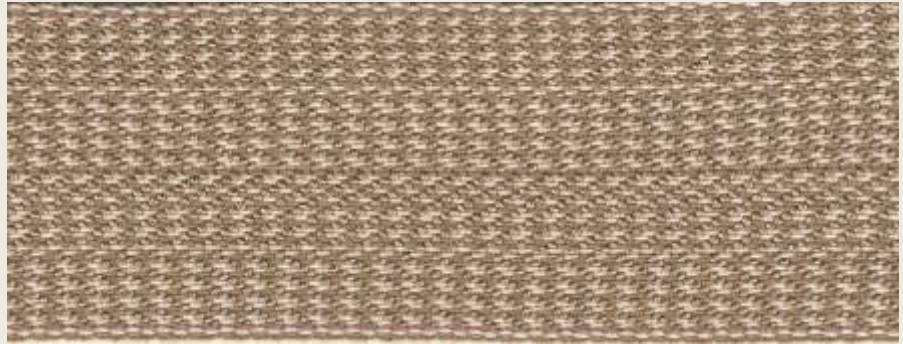


col. 0015



# TEPPICHBAND / CARPET TAPE

**3041**  
zum Nähen/for sewing  
100% CV



# FARBKARTE / COLOR CARD

0001



0204



0098



0055



0202



0085



0201



0218



0057



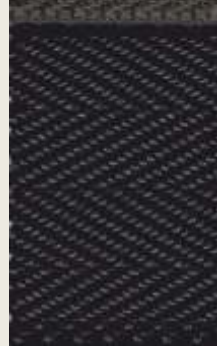
0056



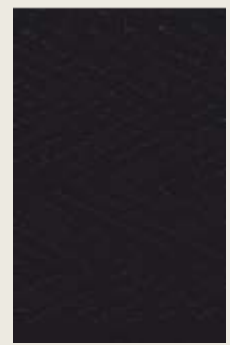
0200



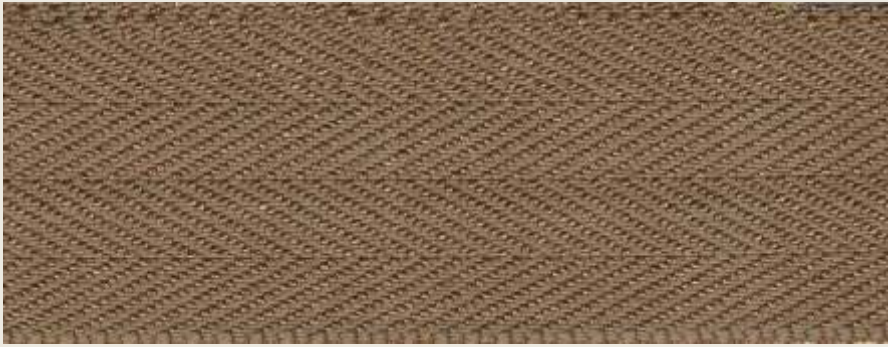
0226



0007



# TEPPICHBAND / CARPET TAPE



**3048**

aufbügelbar/for ironing

100% CV

# FARBKARTE / COLOR CARD



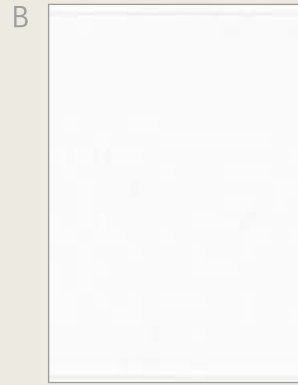
FARBKARTE SATIN BÄNDER UNI  
 COLOR CARD SATIN-RIBBONS UNI

FARBKARTE SATIN EINFASSBÄNDER  
 COLOR CARD SATIN RIBBONS

Art. 6455 col. 0001



Art. 6460 col. 0001



Art. 6458 col. 0001



Art. 6486 col. 0001

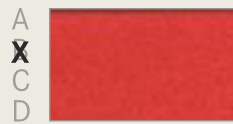


DIE MIT X GEKENNZEICHNETEN ARTIKEL A - F SIND IN DIESEN FARBEN NICHT LIEFERBAR!  
 THE ITEMS A - F MARKED WITH X AREN'T AVAILABLE IN THESE COLORS!

col. 0031



col. 0700



col. 0065



col. 0046



col. 0081



col. 0003



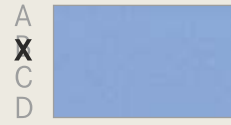
col. 0062



col. 0067



col. 0800



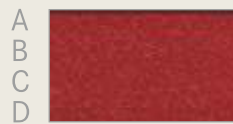
col. 0040



col. 0070



col. 0060



col. 0058



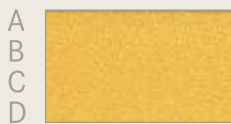
col. 0008



col. 0009



col. 0072



col. 0610



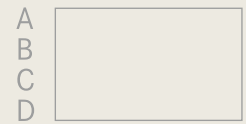
col. 0056



col. 0082



col.



col. 0092



col. 0043



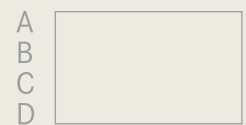
col. 0200



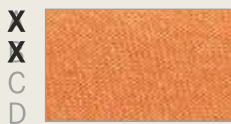
col. 0080



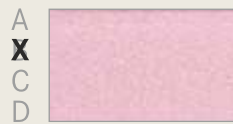
col.



col. 0044



col. 0600



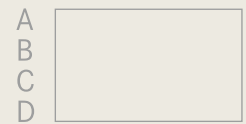
col. 0047



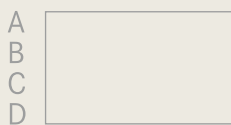
col. 0088



col.



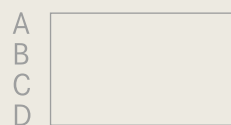
col.



col. 0064



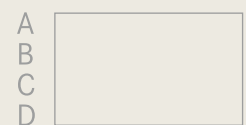
col.



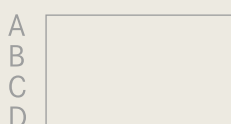
col. 0084



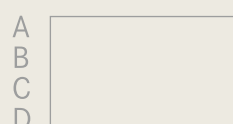
col.



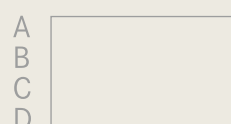
col.



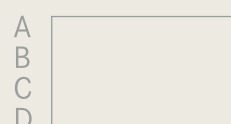
col.



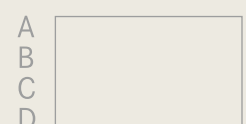
col.



col.



col.





FARBKARTE SATIN EINFASSBÄNDER GECRASHT / COLOR CARD CRASHED SATIN RIBBONS

Art. 6655 col. 0001



Art. 6768 col. 0001



col. 0010



col. 0003



col. 0066



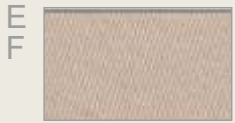
col. 0058



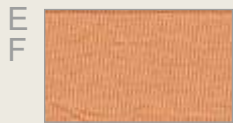
col. 0040



col. 0020



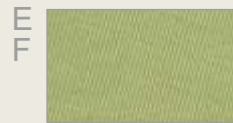
col. 0063



col. 0060



col. 0050



col. 0810



col. 0002



col. 0092



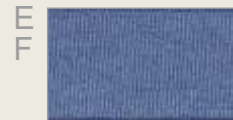
col. 0064



col. 0084



col. 0081



col. 0007



col. 0042



col. 0067



col. 0045

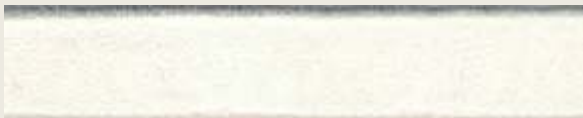


col. 0082



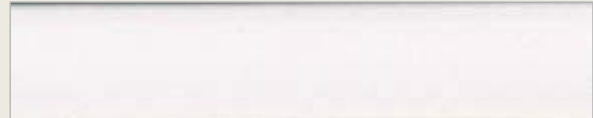
FARBKARTE LEDERIMITAT EINFASSBÄNDER  
COLOR CARD LEATHER-RIBBONS UNI

Art. 6167 col. 0002



FARBKARTE MICROFASER EINFASSBÄNDER  
COLOR CARD MICROFIBRE-RIBBONS

Art. 6050 col. 0001



col. 0070



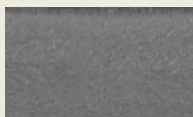
col. 0800



col. 0460



col. 0810



col. 4020



col. 0999



68420/38 mm  
100% PES

col. 0800



col. 0550



col. 0600



col. 0300



col. 0006



col. 0500



col. 0700



col. 0070



col. 0920



col. 0001



# Notizen/Notes

---

---

---

---

---

---

---

---

---

---

---

---

---

---

---

---

---

---

---

---

---

---

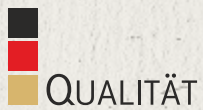
---

---

---

---

---



**Gustav Gerster GmbH & Co. KG**  
Memminger Strasse 18  
88400 Biberach/Riss  
GERMANY

**Verkauf Inland**  
Tel.: 07351 586 - 500  
Fax.: 07351 586 - 5400

[verkauf@gerster.com](mailto:verkauf@gerster.com)  
[www.gerster.com](http://www.gerster.com)

**Worldwide Sales**  
Tel.: +49 7351 586 - 501  
Fax.: +49 7351 586 - 5408

[export@gerster.com](mailto:export@gerster.com)  
[www.gerster.com](http://www.gerster.com)

1223 © [www.gerster.com](http://www.gerster.com)

**GERSTER**  
FINEST GERMAN  
TRIMMINGS

